



VIGILANT 500/I

24 Vdc electromechanical bollard 500 mm high



**MADE
IN ITALY**



9343000 **VIGILANT 500**

9343004 **VIGILANT 500I**

Ø 200 mm • H500 mm • 8/9,2 mm



TRAFFIC
CONTROL



PUBLIC



PRIVATE

24 Vdc electromechanical bollard, powder coating steel or AISI 316 electropolished stainless steel finish.

FEATURES

- High number of cycles and low power consumption
- Ability to operate even in the event of a power failure thanks to the central group with UPS
- Quick and easy to install thanks to the foundation box can be assembled on site without welding
- Equipped with RS485 communication bus and Ethernet connection via TCP / IP
- Device encoder integrated obstacle detection and amperometric
- Equipped with anti-vandal function, which allows to detect a forced command, to reset the bollard and activate an alarm



PLUG&PLAY Connection
between bollard and
control panel



EN124 (40T) Top equipped
with LED lights

VIGILANT

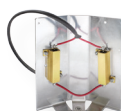
500/I

POWER SUPPLY	230 Vac 50/60 Hz
MOTOR SUPPLY	24 Vdc
ABSORBED POWER	90 W
ABSORBED CURRENT 24Vdc	6 A
STANBY CONSUMPTION	10 W
CONSUMPTION DURING RISING	1 A
MAXIMUM WORKING FREQUENCY*	900 cycles/day
PROTECTION LEVEL	IP 68
OPERATING TEMPERATURE	-20 °C / +50 °C
LUBRICATION	Grease
IMPACT RESISTANCE	18.000 J
BREKOUT RESISTANCE	240.000 J
KG VEHICLE-KM/HOUR	2.500-55
RAISING TIME 120mm/sec	4"
LOWERING TIME 160mm/sec	3"
ELECTRIC BRAKE	2N
WEIGHT (without foundation case)	84/90 kg

(*) The maximum frequency of use indicated in the above table must be understood as indicative data, referred to a single bollard connected to a control panel, at standard temperature rating (20°C, 50% humidity). In the case of unfavorable conditions the frequency of use has to be reduced.

ACCESSORIES

RES
[9679001]



Heating resistance
for cold areas
(accessory supplied
pre-assembled).

BUZZ
[9534040]



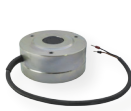
Warning buzzer
(accessory supplied
pre-assembled).

AUT
[9176980]



Device that allows
an automatic
lowering maneuver
of the bollard in case
of power failure
(accessory supplied
pre-assembled).

EB5
[9360010]



5N Electrobroke
(accessory supplied
pre-assembled).

KTTOOLS
[9089010]



Set of installation
tools.

CA500A
[9150002]



Foundation box
in steel with
cathoresis
treatment. Quick
assembly with
screws.

TOP20
[9261000]



Cover for foundation
box CA500A.

C05/10/15/20/25
[9171005 / 006 /
007 / 008 / 009]



Cable with connector
L= 5/10/15/20/25 m.



VIGILANT 500/I

Control panels and components for a basic installation*



**MADE
IN ITALY**

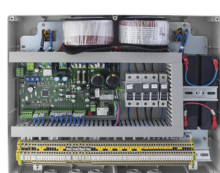
CP1 9176145
CP1K 9176152

CP2 9176146
CP2K 9176153

CP4 9176147
CP4K 9176154

FEATURES

- Power supply: 230/250 Vac - 50/60 Hz - transformer with selectable voltage
- Equipped with command ALL UP / ALL DOWN
- 8 control inputs / 4 control inputs for loop detectors / 2 static outputs 24 V
- 8-Dip switch programmable for different configurations
- Diagnostic LED
- Connection to Ethernet network via TCP / IP LAN
- Communication between the central bollard and central CP by means of the RS485 communication bus
- CP1K, CP2K, CP4K version with batteries for automatic operation during power failure
- Embedded electronics for the management of two traffic lights (no need CP.TL control board for traffic lights)
- 6 different configurations for loop detectors
- Prepared for any kind of command



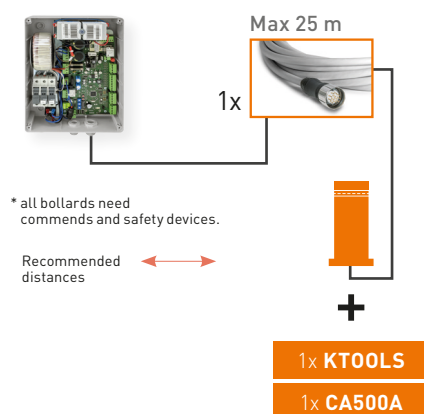
1 VIGILANT 500/I

2 VIGILANT 500/I

3-4 VIGILANT 500/I

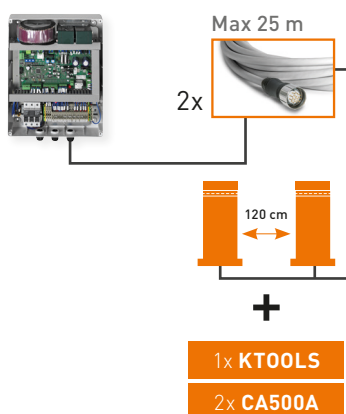
1 VIGILANT 500/I

CP1 | CP1K



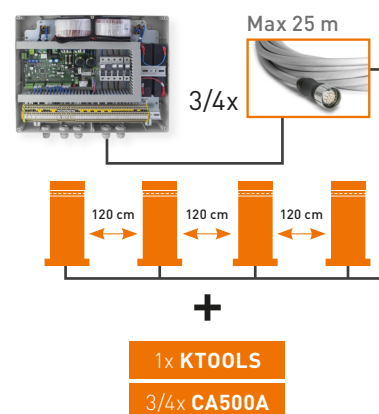
2 VIGILANT 500/I

CP2 | CP2K



3-4 VIGILANT 500/I

CP4 | CP4K



TECHNICAL DRAWING

	A (cm)	B (cm)	C (cm)	D (cm)	E (cm)	F (cm)	IP GRADE
CP1	30	22	12	-	-	-	IP 56
CP2	38	30	12	-	-	-	IP 56
CP4	46	38	12	-	-	-	IP 56
CP1K	30	22	12	30	22	12	IP 56
CP2K	38	30	12	30	22	12	IP 56
CP4K	46	38	12	30	22	12	IP 56

